

2016 Elgin Whirlwind



CHASSIS

2016 Freightliner M2

- Cummins L6, 6.7L ISB Engine

VIN: 1FVACXDT2GHGX4209
S/N: MV30820

BODY

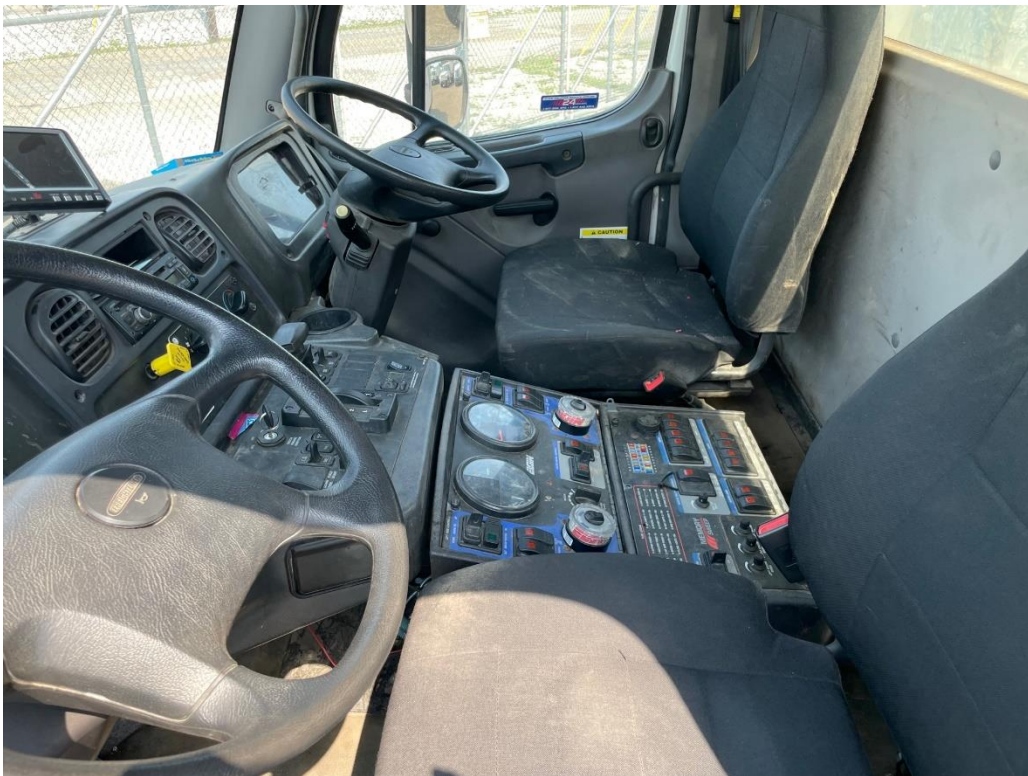
Elgin Whirlwind

- High Pressure Wash Down
- Hopper Inspection Door & Step,
- Side Broom Tilt-Left
- Side Broom Tilt-Right
- Auto Shutter-RH
- Stainless Hopper Screen
- Variable Speed Dual Brooms
- 4045HF JD Rear Engine
- Urethane Lined Hopper
- Hydraulic Wandering Hose-Variable Speed
- Wandering Hose Extension
- Single Rear Flood Light
- Hopper Drain
- Air Purge
- Auxiliary Engine Pre-Cleaner
- Wire Mounted Right/Left Rear Strobe
- Front Spray Bar



Subsidiary of Federal Signal Corporation

2016 Elgin Whirlwind



1.800.263.1262 | jjei.com

STOCK: U006014

MILEAGE: 15,500 Miles
AUX ENG HOURS: 1,938