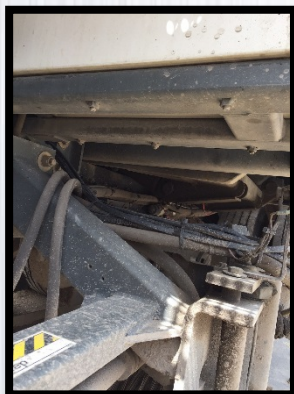




USED EQUIPMENT

Subsidiary Of Federal Signal Corporation

ELGIN EAGLE



CHASSIS

- 2010 UD Chassis With Dual Steer
- 230 HP / 6 Cylinder Diesel
- Allison 2500RDS Automatic
- 12,000 LBS Front Axle
- 21,000 LBS Rear Axle
- LH & RH High Back Cloth Seats
- LH & RH Air Ride Seat
- LH & RH Heated Remote Mirrors
- Dual Mounted 8.5" Convex Mirrors
- AC / Heat / AM /FM / CD / Block Heater

Vin: JNAPC81L1AAC80252

S/N: F-2776-D

As Of Jan 15, 20

BODY

- 4.5 Cubic Yard Hopper With Wash Down
- 49 HP John Deere Aux Engine Tier 3
- 10' High Side Dump For Waste Containers
- Dual 42" Side Brooms
- 60" Hydraulic Main Broom
- Conveyor System With Wash Down
- 280+ Gallon Poly Water Tank
- Low Water Indicator In Cab
- Conveyor Stall Alarm
- Resume Sweep After Transport
- Hopper Full Alarm In Cab
- Slow Moving Vehicle Sign
- Front Spray Bar
- Side Broom Tilt – LH & RH
- Auto Lube System - Sweeper
- LED Strobe With Guards Front & Rear
- LED Hopper Light

STOCK: UC021324

MILEAGE: 25,000 Miles

CHASSIS: 3,900 Hrs

1.866.737.8470 | jjei.com