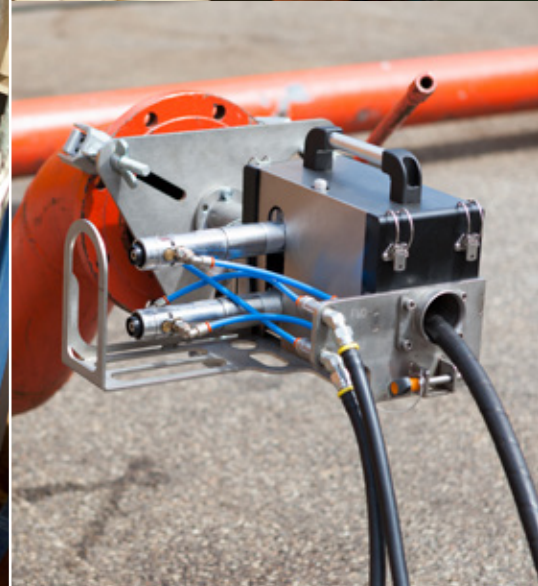




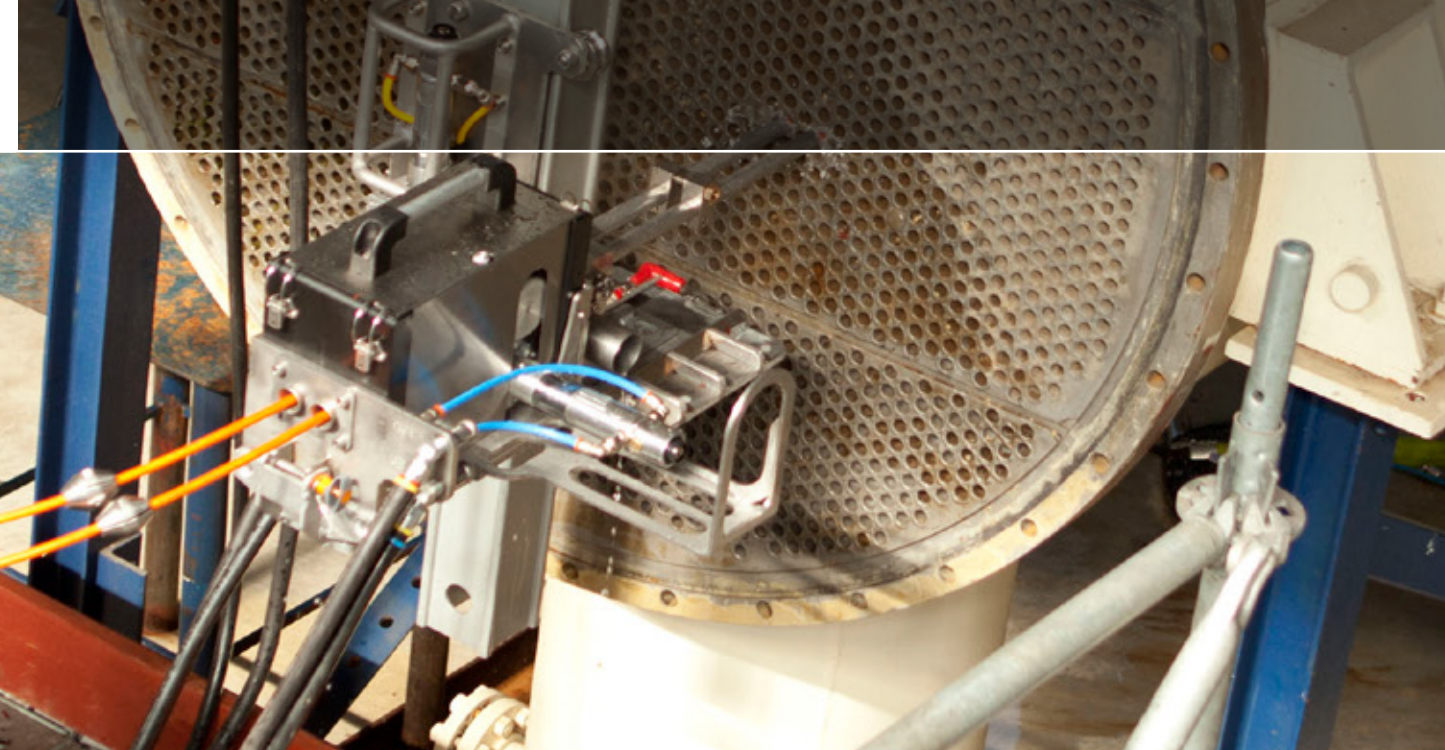
# PEINEMANN

EQUIPMENT



2XLTC  
XXLTC  
**BROCHURE**





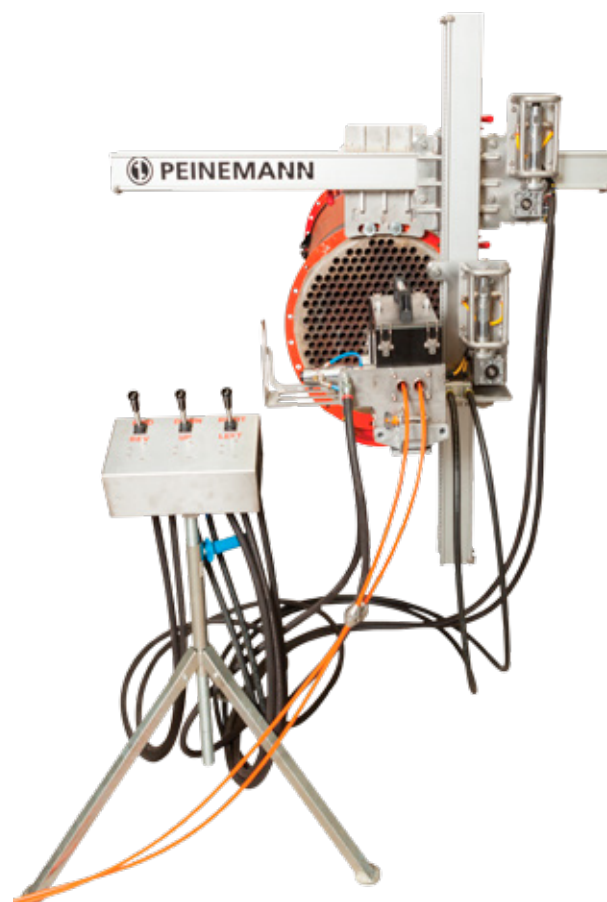
## 2XLTC HIGH PRESSURE TUBE CLEANING

*Portable, affordable, safe and easy to assemble are just some of the main characteristics of the new tube cleaning equipment: The PEINEMANN 2XLTC. Made from high quality materials we managed to manufacture equipment that will have improved cleaning capabilities at a relatively small investment.*

*The added benefit is that the whole structure is portable modular, easy to dismantle and it can be used in conjunction with a small high pressure pump. The remote control will increase safety as the operator will be operating the tube cleaning equipment from a safe working distance.*

### 2XLTC on Flex Frame

- A light weight and safe set up that will allow for cleaning bundles at difficult to reach locations with ease.
- The Flex Frame set up is very portable which is easily mounted on the flange of the bundles.
- Here too the clamp plate will allow for different models of machines making it extremely versatile.
- Operated by air via a simple remote control and consists of 4 major components, each weigh less than 23 kg (50 Lbs)
- The same remote can be used for all movements of the Flex Frame and 2XLTC.
- Will allow the use of multiple hose sizes ranging from 3/2 up to 8/4 to cover the majority of tubes
- Easy to set up on the cleaning bay and working with two flex lances at a time.



PEINEMANN EQUIPMENT

### 2XLTC on positioner frame

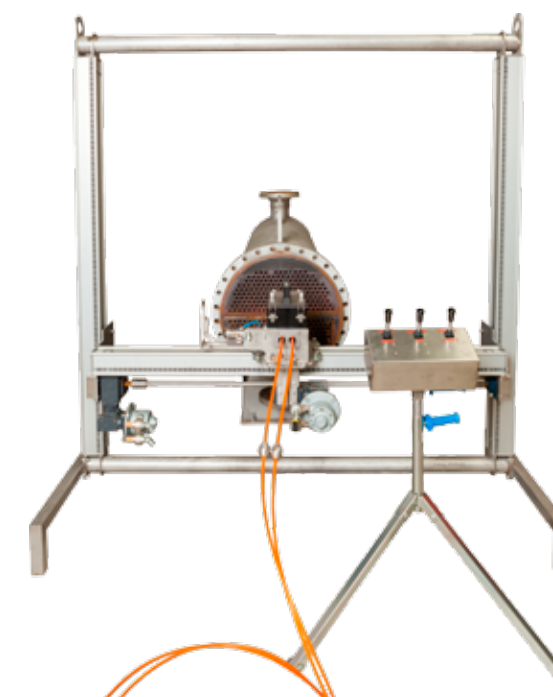
This set up consists of a light weight but yet a strong indexing frame to which the 2XLTC is mounted. Operated by air via a simple remote control.

### Safe

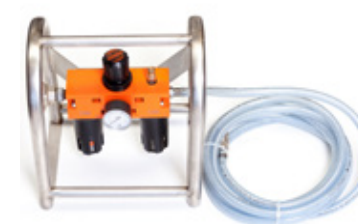
The 2XLTC is controlled via remote control, keeping the operator away from the danger. Hose catchers that are fitted to the equipment prevent the hoses from coming out of the machine. At the other end of the flex hose you can fit a stopper which limits the length of hose to be fed down the tubes.

### Complete setup

The standard 2XLTC setup is standard supplied with a complete 5/2 setup including air supply unit.



### AIR SUPPLY UNIT



### Air/water separator

With a maximum air pressure of 6,3 Bar (95 Psi)

### MOUNTING BRACKET



### For use on Flex Frame

For mounting the Flex Frame on the tube flange.

### REMOTE CONTROL

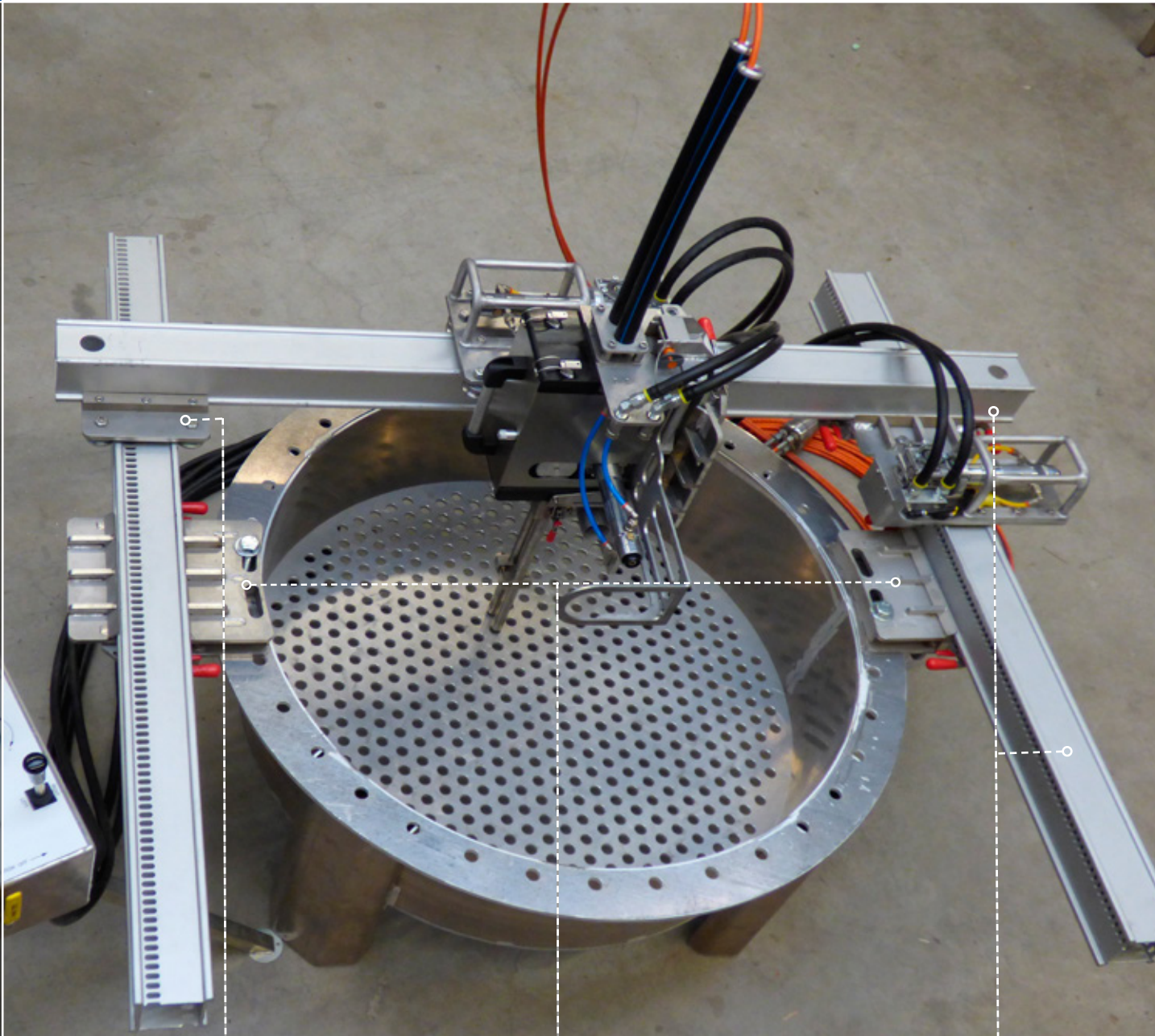


### Remote control

Standard 3 way remote control



# 2XLTC VERTICAL OPERATION



NON DRIVEN CART



**For use on Flex Frame**  
For additional support of Flex Frame on opposite side.

MOUNTING BRACKET



**For use on Flex Frame**  
Two needed for vertical operation, to mount second boxrail for support.

SLOTTED RAIL



**For use on Flex Frame**  
Slotted rail for guiding the non driven cart. Three needed for vertical operation.

## 2XLTC A VERSATILE MACHINE

*The Peinemann 2XLTC has the capabilities of cleaning both vertical and horizontal bundles at difficult to reach locations in combination with a relatively small HP pump.*

The whole construction is still portable and can be positioned at difficult to reach areas. The 2XLTC is controlled via remote control, keeping the operator away from the danger. Hose catchers that are fitted to the equipment prevent the hoses from coming out of the machine. At the other end of the flex hose you can fit a stopper which limits the length of hose to be fed down the tubes.

SIDE ROLLERS



**For use on scaffold pipes**  
For driving on scaffold pipes. Two needed for vertical operation.



# VARIOUS OPTIONS 2XLTC

The 2XLTC is a multifunctional tool that can be put to use in many different situations for different purposes. With the 2XLTC various hose packages, 2XLTC to XXLTC conversion kit and options are available.

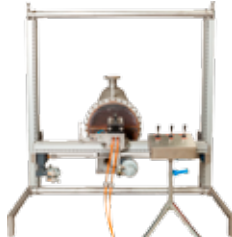
## SIDE ROLLERS



### Side roller set

Side rollers for vertical use on scaffold pipes. Comes as a set of two rollers.

## POSITIONER



### Peinemann XY positioner

With fixed legs. 210 x 221 x 99cm, 83"x87"x39" OD

## GUIDE TUBES



### Guide tube set

Available in 400mm, 1200mm and diameters 1/2" and 3/4"

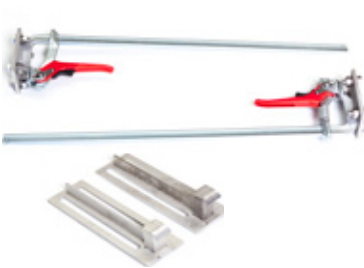
## SLOTTED RAIL



### Slotted rail

Slotted rail for vertical exchangers and fin fan coolers

## C-CLAMP



### C-Clamp

800mm C-clamp with mounting bracket for box rail.

## SPITFIRE BRACKET



### Spitfire bracket

Bracket for mounting a gun nozzle like a Spitfire. Does not include Spitfire.

## MOUNTING BRACKET



### For use on Flex Frame

For mounting the Flex Frame on the shell flange

## NON DRIVEN CART



### For use on Flex Frame

For additional support of flex frame on opposite sides for vertical cleaning

## LEFT/RIGHT CLAMPS



### Left/right clamps

Flange clamps for mounting a Flex Frame setup on an exchanger.

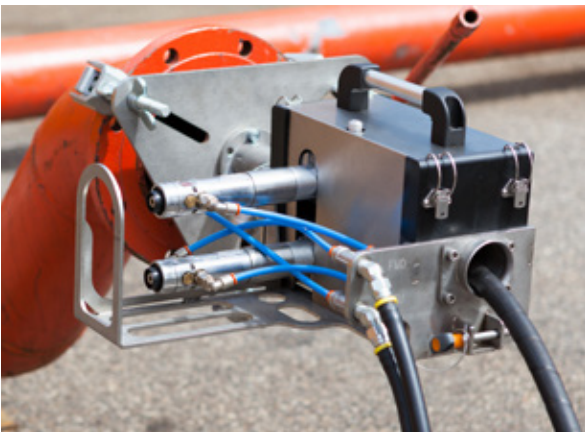


# XXLTC ADDITIONAL PIPE CLEANING FEATURE

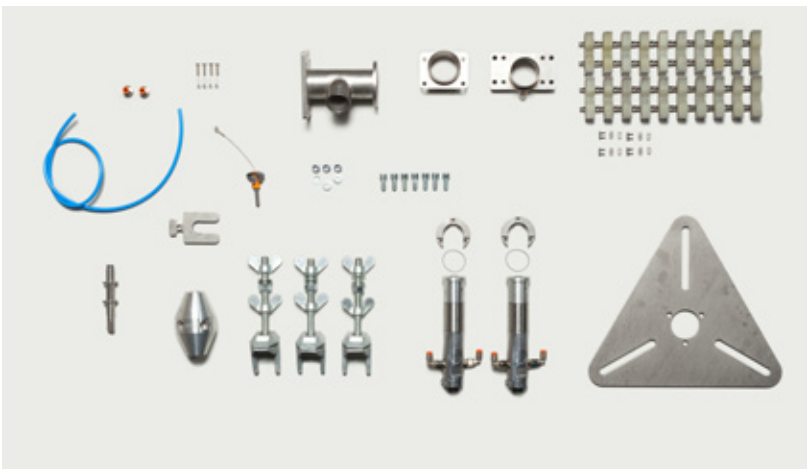
As with most cleaning equipment from Peinemann this new 2XLTC can easily be converted for additional tasks. This 2XLTC is a multifunctional tool that can easily be converted to allow for a single large hose for pipe cleaning applications.

### Automated pipe cleaning

The single large hose set up, known as XXLTC, comes with an easy exchangeable track and a dual motor set up. The larger single track will allow for 3/8", 1/2" and 3/4" (DN 10 - DN 20) hoses and has a large force of 185kg -400 lbs in order to work with large lengths of hoses for pipelines. The XXLTC is directly mounted to pipe flange.



## CONVERSION KIT TO CONVERT 2XLTC IN XXLTC



## SINGLE REMOTE



### Remote control

The XXLTC can be operated through a special single handle remote control for in and out movement.

## 2XLTC & XXLTC

### Technical specifications (approx)

	2XLTC	XXLTC
Hose Size (OD)	7 mm- 15 mm (.275" - .590")	18 mm - 35 mm (3/8" and 3/4")
Maximum OD hose coupling	21 mm (.83")	55 mm (2.17")
Maximum capacity	0,38 KW (0,5 PK)	1,3 KW (1,74 PK)
Minimum air pressure	3,0 Bar (45 Psi)	3,0 Bar (45 Psi)
Maximum air pressure	6,3 Bar (95 Psi)	6,3 Bar (95 Psi)
Air consumption	180 l/m - 3 l/s at max RPM (16.5 CFM)	360 l/m - 6 l/s at max RPM (33 CFM)
Recommended flow	76 ltr per min. (2 x 38 ltr./2 x 10 gallon)	120 ltr (30 gallon) - 240 ltr (60 gallon) per min.
Recommended pressure	1000-1400 Bar (15,000 - 20,000 Psi)	1000-1400 Bar (15,000 - 20,000 Psi)
Maximum pressure	Suitable to work with pressures up to 2800 Bar (40,611 Psi)	Suitable to work with pressures up to 2800 Bar (40,611 Psi)
Feed rate (unloaded)	45 - 70 cm per second (18" - 30" per second)	10 - 20 cm per second (4" - 8" per second)
Max. pull/push strength	max 30 kg (66 Lbs)	max 180 kg (400 Lbs)
Weight drive unit only	21 kg (46 Lbs)	22 kg (48 Lbs)

## Peinemann Equipment

See also  
[www.peinemannequipment.com](http://www.peinemannequipment.com)

### Peinemann Equipment B.V.

Mandenmakerstraat 190  
3194 DA Hoogvliet  
Phone: +31(0)10 - 295 50 00  
Fax: +31(0)10 - 295 50 59

### Peinemann USA

22820 I-H 45 N., Bldg #7, Ste P  
Spring, TX 77373  
Phone: 281-288-7979  
Fax: 866-431-5140

E-mail: [info@peinemann.nl](mailto:info@peinemann.nl)  
Website: [www.peinemannequipment.com](http://www.peinemannequipment.com)